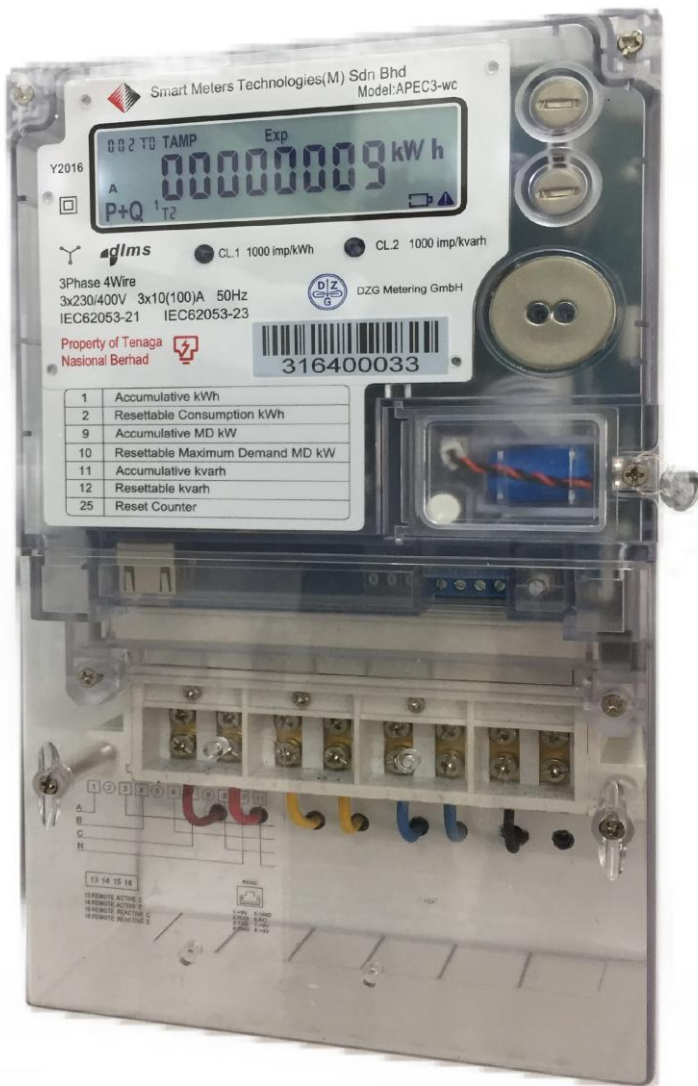


# APEC3-WC

## ELECTRONIC MULTIFUNCTIONAL THREE PHASE WHOLE CURRENT METER



### Metering Functions

- Active import and export energy & demand register
- Reactive import and export energy & demand register
- Consumption & cumulative energy register
- Cumulative maximum demand calculation
- Up to 12 month's history energy and demand data
- Penalty (Imax) energy register
- Neutral current measurement

### Instantaneous Parameter Measurements

Voltage, Current, Neutral Current, Zero Sequence Current, Power Factor, Power (active, reactive, apparent), Frequency, Phase Angle and etc.

### Load Profile

- Load profile interval is programmable (5,10,15,30,60 min)
- Load profile data are stored with time stamp
- Maximum 15 channels

### LCD Display

LCD display main value with 8 digits, the LCD size: 95mm x 26mm, Digit size: 13mm x 5.7mm, Four display modes with programmable display item:

- AUTO mode display (Auto Scroll)
- ALT mode display
- TEST mode display (with decimal places)
- POWER DOWN mode display

### Communication Port

RS232 (provides 9V for module connection) & optical port

**ACCURACY CLASS 1.0 (kWh) / 2.0 (kVArh)**



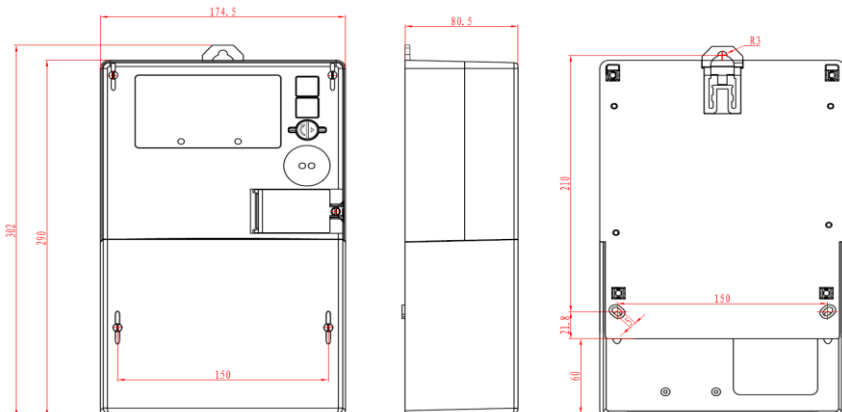
# APEC3-WC

## ELECTRONIC MULTIFUNCTIONAL THREE PHASE WHOLE CURRENT METER

### METER TECHNICAL DATA

Accuracy Class	Active Class 1.0 ; Reactive Class 2.0
Rated Voltage	3 x 230 / 400 V
Rated Current (max)	3 x 10 (100) A
Frequency	50 Hz
Optical Test & Function Indicator	LED & Output Pulse
Meter constant for LED	1000 imp/kWh & 1000 imp/kVArh
Meter constant for Output Pulse	Configurable
Typical Power Consumption	
Voltage circuit active / apparent power at $U_n$	< 2W / 10VA
Current circuit apparent power at $I_b$	< 4VA
Battery	
Life cycle	> 10 years
RTC accuracy	< 5ppm
Class of Insulation	II
Degree of Protection	IP54
EMC Properties	
Isolation	4kV AC, 50 Hz, 1 min
High Voltage	Rise/fall time = 1.2/50 $\mu$ s and voltage = 10kV
Display	
LCD	8 digits, decimal places can be configured
Life cycle	10 years
Temperature Range	
Typical Operation	-25°C to +70°C
Storage	-40°C to +85°C
Dimension	Length x Width x Height = 302mm x 174.5mm x 80.5mm
Weight	Approximate 2.4 kg

Overall Dimensions (mm)



Connection Diagram

