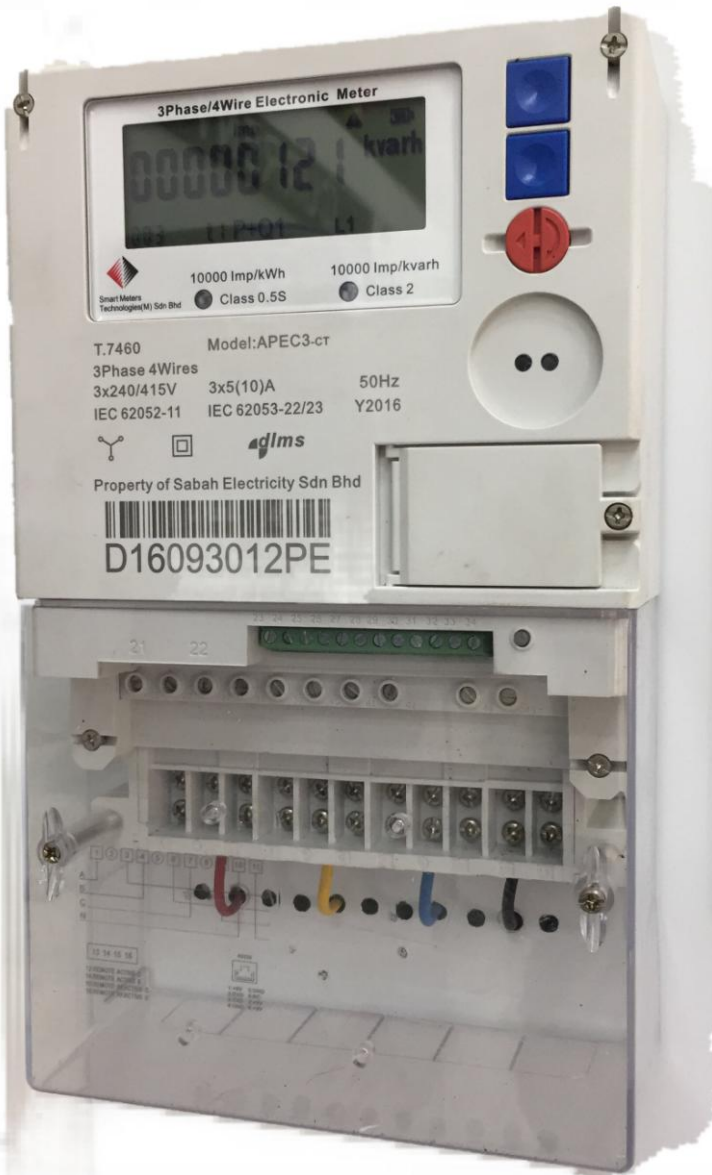


# APEC3-CT

**ELECTRONIC MULTIFUNCTIONAL THREE PHASE CT OPERATED METER (HV/MV/LV)**



#### **Metering Functions**

- Active import and export energy & demand register
- Reactive import and export energy & demand register
- Consumption & cumulative energy register
- Cumulative maximum demand calculation
- Up to 12 month's history energy and demand data
- Penalty (Imax) energy register
- Neutral current measurement
- Programmable CT & VT ratio for energy & demand

#### **Instantaneous Parameter Measurements**

Voltage, Current, Neutral Current, Zero Sequence Current, Power Factor, Power (active, reactive, apparent), Frequency, Phase Angle and etc.

#### **Load Profile**

- Load profile interval is programmable (5,10,15,30,60 min)
- Load profile data are stored with time stamp
- Maximum 15 channels

#### **LCD Display**

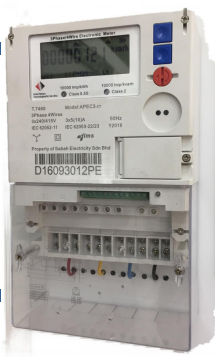
LCD display main value with 8 digits, the LCD size: 82mm x 32mm, Digit size: 5.69mm x 13mm, Four display modes with programmable display item:

- AUTO mode display (Auto Scroll)
- ALT mode display
- TEST mode display (with decimal places)
- POWER DOWN mode display

#### **Communication Port**

RS232 (provides 9V for module connection) & RS485 (provides 9V for module connection) & optical port

**ACCURACY CLASS 0.2S/0.5S (kWh) / 2.0 (kVArh)**



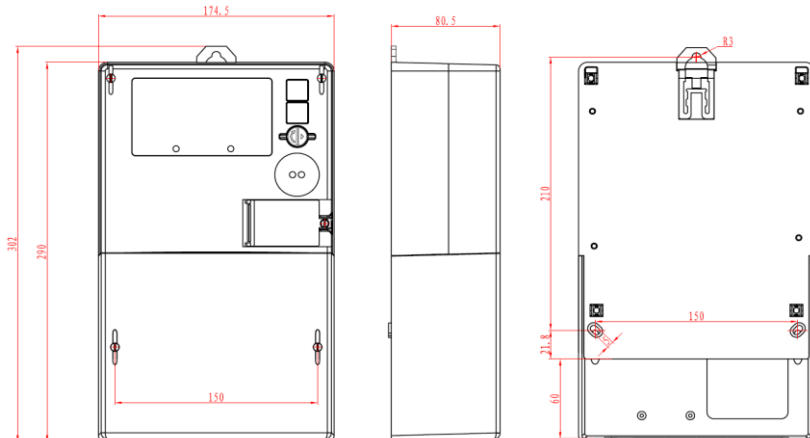
# APEC3-CT

## ELECTRONIC MULTIFUNCTIONAL THREE PHASE CT OPERATED METER (HV/MV/LV)

### METER TECHNICAL DATA

Accuracy Class	Active Class 0.2S/0.5S ; Reactive Class 2.0
Rated Voltage	3 x 230 / 400 V ; 3 x 240 / 415 V
Rated Current (max)	3 x 1 (10) A ; 3 x 5 (10) A
Frequency	50 Hz
Optical Test & Function Indicator	LED & Output Pulse
Meter constant for LED	10000 imp/kWh & 10000 imp/kVAh
Meter constant for Output Pulse	Configurable (5 I/O Port)
Typical Power Consumption	
Voltage circuit active / apparent power at Un	< 2W / 10VA
Current circuit apparent power at Ib	< 1VA
Battery	
Life cycle	> 10 years
RTC accuracy	< 5ppm
Class of Insulation	II
Degree of Protection	IP54
Auxiliary Supply Facility	(optional)
EMC Properties	
Isolation	4kV AC, 50 Hz, 1 min
High Voltage	Rise/fall time = 1.2/50µs and voltage = 10kV
Display	
LCD	8 digits, decimal places can be configured
Life cycle	10 years
Temperature Range	
Typical Operation	-25°C to +70°C
Storage	-40°C to +85°C
Dimension	Length x Width x Height = 302mm x 174.5mm x 80.5mm
Weight	Approximate 2.0 kg

Overall Dimensions (mm)



Connection Diagram

